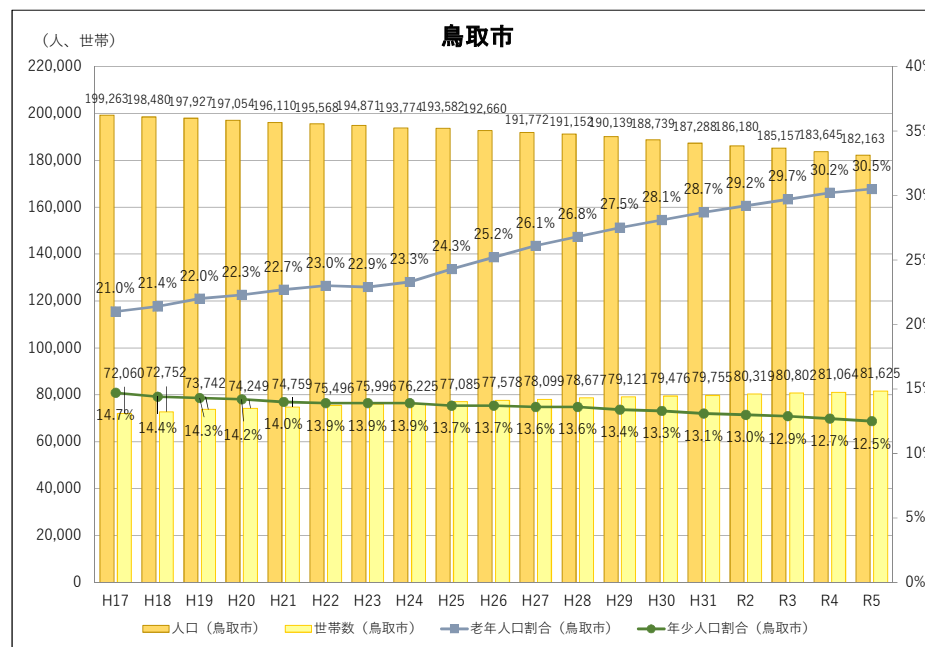
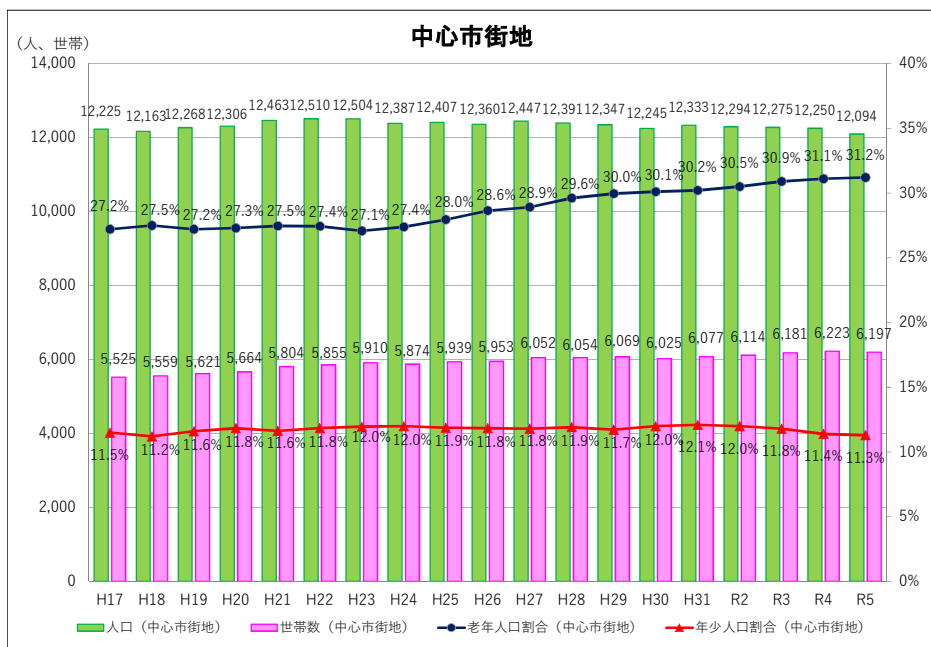


中心市街地の人口、高齢化率等の推移



		H17	H18	H19	H20	H21	H22	H23	H24	H25	H26	H27	H28	H29	H30	H31	R2	R3	R4	R5
人口	中心市街地	12,225	12,163	12,268	12,306	12,463	12,510	12,504	12,387	12,407	12,360	12,447	12,391	12,347	12,245	12,333	12,294	12,275	12,250	12,094
	袋川以南	6,690	6,726	6,866	6,934	7,126	7,258	7,613	7,294	7,335	7,303	7,404	7,385	7,388	7,367	7,417	7,383	7,450	7,460	7,346
	袋川以北	5,535	5,437	5,402	5,372	5,337	5,252	5,191	5,093	5,072	5,057	5,043	5,006	4,959	4,878	4,916	4,911	4,825	4,790	4,748
	旧鳥取市	149,606	149,280	149,311	148,901	148,541	148,479	148,294	147,850	148,098	147,788	147,612	147,590	147,397	146,546	145,892	145,402	144,966	144,139	143,400
	中心市街地シェア	8.2%	8.1%	8.2%	8.3%	8.4%	8.4%	8.4%	8.4%	8.4%	8.4%	8.4%	8.4%	8.4%	8.5%	8.5%	8.5%	8.5%	8.5%	8.4%
	鳥取市	199,263	198,480	197,927	197,054	196,110	195,568	194,871	193,774	193,582	192,660	191,772	191,152	190,139	188,739	187,288	186,180	185,157	183,645	182,163
世帯数	中心市街地	5,525	5,559	5,621	5,664	5,804	5,855	5,910	5,874	5,939	5,953	6,052	6,054	6,069	6,025	6,077	6,114	6,181	6,223	6,197
	1世帯当たりの人数	2.2	2.2	2.2	2.2	2.1	2.1	2.1	2.1	2.1	2.1	2.1	2.0	2.0	2.0	2.0	2.0	2.0	2.0	2.0
	袋川以南	3,146	3,203	3,280	3,299	3,428	3,516	3,578	3,573	3,656	3,683	3,764	3,759	3,772	3,781	3,807	3,836	3,914	3,960	3,933
	袋川以北	2,379	2,356	2,341	2,365	2,376	2,339	2,332	2,301	2,283	2,270	2,288	2,295	2,297	2,244	2,270	2,278	2,267	2,263	2,264
年少人口割合 (15歳未満)	中心市街地	11.5%	11.2%	11.6%	11.8%	11.6%	11.8%	12.0%	12.0%	11.9%	11.8%	11.8%	11.9%	11.7%	12.0%	12.1%	12.0%	11.8%	11.4%	11.3%
	袋川以南	10.7%	10.4%	11.1%	11.6%	11.5%	11.8%	11.8%	12.1%	11.8%	11.5%	11.4%	11.6%	11.6%	11.8%	11.5%	11.4%	10.9%	10.6%	
	袋川以北	12.4%	12.1%	12.3%	12.2%	11.8%	12.0%	12.2%	11.9%	12.0%	12.4%	12.4%	12.3%	11.9%	12.4%	12.6%	12.8%	12.5%	12.1%	12.4%
	鳥取市	14.7%	14.4%	14.3%	14.2%	14.0%	13.9%	13.9%	13.9%	13.7%	13.7%	13.6%	13.6%	13.4%	13.3%	13.0%	13.0%	12.9%	12.7%	12.5%
老年人口割合 (65歳以上)	中心市街地	27.2%	27.5%	27.2%	27.3%	27.5%	27.4%	27.1%	27.4%	28.0%	28.6%	28.9%	29.6%	30.0%	30.1%	30.2%	30.5%	30.9%	31.1%	31.2%
	袋川以南	24.1%	24.2%	23.8%	23.7%	23.7%	23.5%	23.2%	23.6%	24.1%	25.2%	25.6%	26.4%	26.7%	27.2%	27.6%	27.8%	27.9%	28.3%	28.6%
	袋川以北	31.0%	31.5%	31.5%	31.9%	32.5%	32.5%	32.5%	32.8%	33.6%	33.6%	33.7%	34.3%	34.8%	34.4%	34.1%	34.6%	35.5%	35.4%	35.1%
	鳥取市	21.0%	21.4%	22.0%	22.3%	22.7%	23.0%	22.9%	23.3%	24.3%	25.2%	26.1%	26.8%	27.5%	28.1%	28.7%	29.2%	29.7%	30.2%	30.5%

資料：住民基本台帳（各年3月末現在）