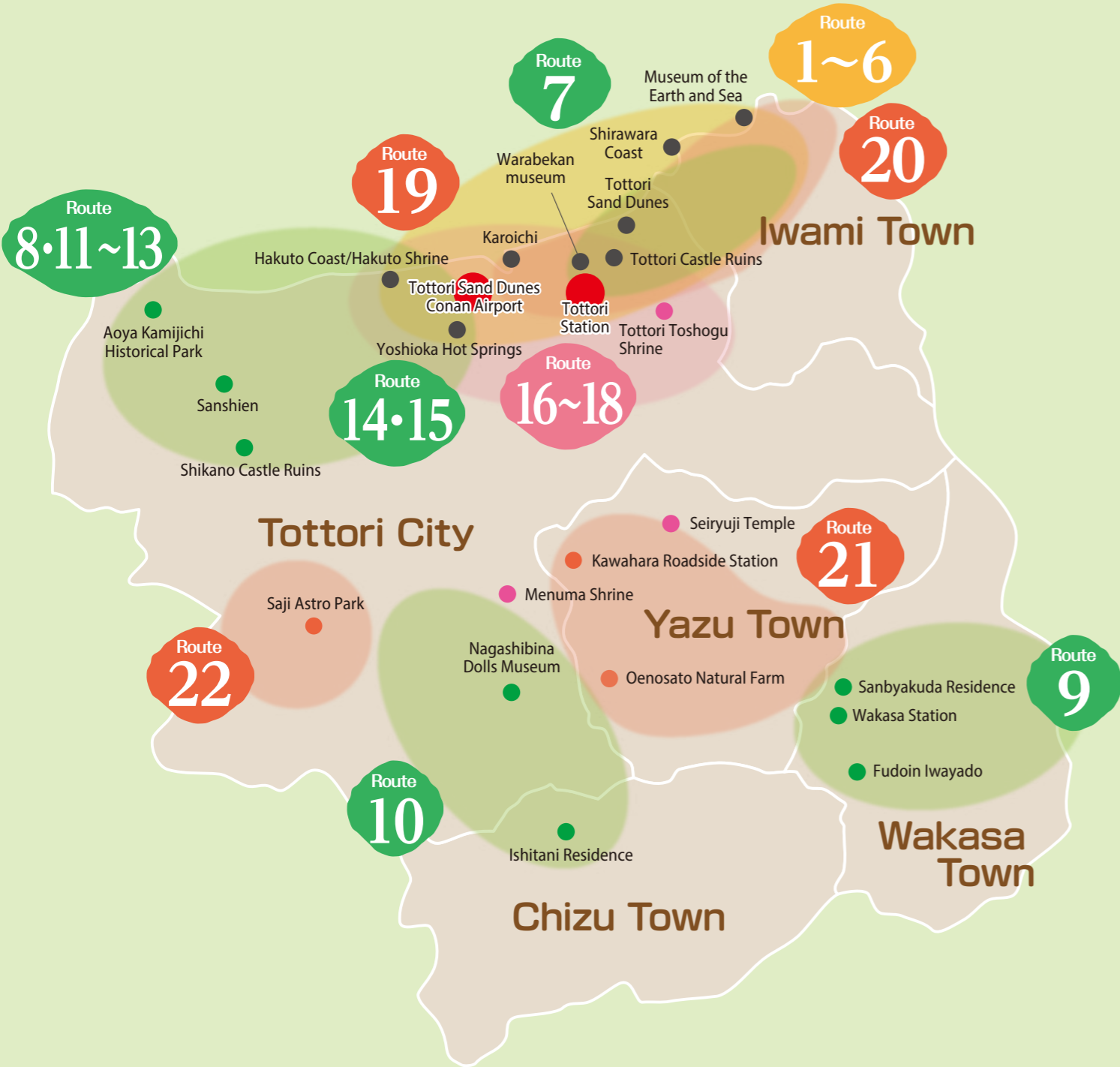




Tottori

Area Map



Make memories! 😊

6,000yen
per car for 3 hours
up to 4 passengers.

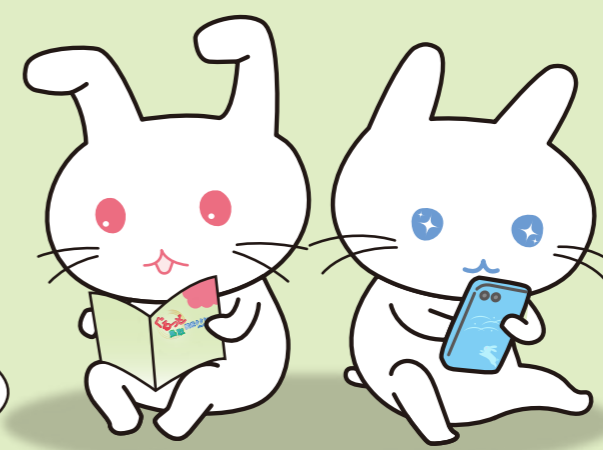


2026 Taxi tour plans



I'd love to visit many different shrines.

I want to eat a lovely meal.



I feel like visiting classic sightseeing spots.

Reservations are not accepted.

- ◆ Routes cannot be changed.
- ◆ Flat rate of ¥6,000 for 3 hours, fixed duration, except in unavoidable circumstances.(e.g., traffic congestion)
- ◆ Admission to facilities, meals and parking fee at the Sand Dunes (¥500) are not included.
- ◆ Before heading out on the taxi tour, please consult at the departure point to confirm the route status.
- ◆ There is a limited number of vehicles per year. The service will end once the maximum is reached.

Departures Reception Hours: 9:00-17:00

JR Tottori Station
Tottori City International Tourist Support Center
111-1 Higashihonji-cho, Tottori City TEL: 0857-22-7935
E-mail: international@hal.ne.jp

Shikano (Sanshien) II
National Youth Hostel Sanshien
972-1 Imaichi, Shikano-cho, Tottori City
TEL:0857-84-2211

Tottori Sand Dunes Conan Airport * Only the routes marked with * are available. See inside for details.
Tottori Sand Dunes Conan Airport Information Desk
4-110-5 Koyama-cho, Tottori City TEL:0857-28-1402

Yoshioka Hot Springs II
Yoshioka Onsen Kaikan Ichinoyu
666 Yoshiokaonsencho, Tottori City TEL: 0857-57-0555

Organizer Tottori Taxi Cooperative Association Business Hours: 9:00 -15:00
206 Sakaemachi, Tottori City E-mail: hire-kyodo@yacht.ocn.ne.jp

Tottori Sand Dunes

With☆☆ You can start from/finish at either Tottori Sta. or Tottori Sand Dunes Conan Airport



- ★ **1 Tottori Sand Dunes A**
Tottori Sta. ----- The Dunes/Sand Museum ----- Uradome Coast
(15min) 80min (15min) 20min
----- Castle Ruins ----- Tottori Sta.
(25min) 15min (10min)
- ★ **2 Tottori Sand Dunes B**
Tottori Sta. ----- Hakuto Shrine/Coast ----- The Dunes (Sand Museum or Tanegaike Pond)
(20min) 40min (20min) 60min
----- Castle Ruins ----- Tottori Sta.
(15min) 15min (10min)
- ☆ **3 Tottori Sand Dunes C**
Tottori Sta. ----- Hakuto Shrine/Coast ----- Uradome Coast ----- The Dunes (Tour ends here)
(20min) 40min (35min) 70min (15min)
- ☆ **4 Tottori Sand Dunes D**
Tottori Sta. ----- The Dunes/Sand Museum ----- Karo Shrine ----- Karo Market ----- Tottori Sta.
(15min) 66min (20min) 30min (4min) 25min (20min)
- ☆ **5 Tottori Sand Dunes E**
Tottori Sta. ----- Uradome Coast Boat Tour ----- Shirawara Coast ----- Museum of the Earth and Sea
(19min) 45min (15min) 5min (15min) 20min
----- The Dunes/Sand Museum ----- Tottori Sta.
(16min) 30min (15min)
- ☆ **6 Tottori Sand Dunes F**
Tottori Sta. ----- The Dunes/Sand Museum ----- Hakuto Shrine/Coast ----- Karo Market ----- Conan Airport ----- Tottori Sta.
(15min) 40min (20min) 20min (10min) 25min (5min) 25min (20min)



History and Culture

With☆☆ You can start from/finish at either Tottori Sta. or Tottori Sand Dunes Conan Airport



- ☆ **7 Songs and Nostalgia**
Tottori Sta. ----- Warabekan Museum ----- Castle Ruins ----- The Dunes/Sand Museum ----- Tottori Sta.
(5min) 60min (3min) 22min (15min) 60min (15min)
- 8 Historic ruins of Yayoi Period**
Tottori Sta. ----- Hakuto Shrine/Coast ----- Aoya Japanese Paper Workshop ----- Aoya Kamijichi Historical Park ----- Tottori Sta.
(20min) 20min (20min) 22min (8min) 60min (30min)
- ☆ **9 Steam Locomotives and Wakasa Railway**
Tottori Sta. ----- Sanbyakuda Residence ----- Iwayado Temple ----- Wakasa Sta./Town Walk (Kariyadori St., Storehouses) ----- Tottori Sta.
(45min) 15min (10min) 15min (10min) 50min (35min)
- ☆ **10 Chizu Town**
Tottori Sta. ----- Mochigase (Nagashibina Dolls Museum) ----- Chizu Town (Ishitani Residence) ----- Tottori Sta.
(25min) 45min (15min) 60min (35min)
- ☆ **11 Shikano Town**
Tottori Sta. ----- Hakuto Shrine/Coast ----- Shikano Castle Ruins/Town Walk ----- Tottori Sta.
(20min) 50min (20min) 55min (35min)
- 12 Shikano (Sanshien) I**
Tottori Sta. ----- The Dunes/Sand Museum ----- Hakuto Shrine/Coast ----- Shikano Castle Ruins/Town Walk ----- Sanshien Youth Hostel
(15min) 55min (20min) 40min (20min) 25min (5min)
- 13 Shikano (Sanshien) II**
Sanshien Youth Hostel ----- Hakuto Shrine/Coast ----- Karo Market ----- The Dunes/Sand Museum ----- Tottori Sta.
(15min) 40min (10min) 25min (15min) 60min (15min)



14 Yoshioka Hot Springs I

Tottori Sta. ----- Ichino yu (Hot Springs) ----- Hakuto Shrine/Coast ----- The Dunes/Sand Museum ----- Tottori Sta.
(20min) 45min (15min) 30min (25min) 30min (15min)

15 Yoshioka Hot Springs II

Ichino yu (Hot Springs) ----- Hakuto Shrine/Coast ----- Karo Market ----- The Dunes/Sand Museum ----- Tottori Sta.
(15min) 35min (10min) 30min (15min) 60min (15min)



Myths and Historical Shrines

16 Mythology I (White Rabbit Myth and Matchmaking)

Tottori Sta. ----- Menuma Shrine ----- Hakuto Shrine/Coast ----- Tottori Sta.
(20min) 30min (30min) 80min (20min)

17 Mythology II (Ikeda Clan Shrines and White Rabbit Myth)

Tottori Sta. ----- Kurata Hachimangu Shrine ----- Toshogu Shrine ----- Hakuto Shrine/Coast ----- Tottori Sta.
(10min) 25min (15min) 40min (25min) 45min (20min)

18 Mythology III (Connecting both White Rabbit Myths)

Tottori Sta. ----- Hakuto Shrine (Yazu Town) ----- Seiryuji Temple ----- Hakuto Shrine/Coast ----- Tottori Sta.
(21min) 15min (5min) 35min (36min) 48min (20min)



Food and Culture

19 Tottori Anime I

Tottori Sta. ----- Karo Shrine ----- Karo Market ----- Conan Airport ----- Tottori Sta.
(15min) 26min (4min) 50min (5min) 60min (20min)

20 Tottori Anime II

Tottori Sta. ----- Uradome Beach ----- Tajiri Port ----- Shirawara Lookout ----- Ajiro ----- Oiwa Sta. ----- Kawasaki Brg. ----- Arai Railway Crossing ----- Tottori Sta.
(23min) 15min (2min) 30min (5min) 10min (3min) 8min (6min) 30min (5min) (3min) 8min (22min)

21 Pancakes at Oenosato

Tottori Sta. ----- Oenosato ----- Kawahara Roadside Station ----- Tottori Sta.
(30min) 90min (14min) 25min (21min)

22 Saji Town-Folktales & Astro Park

Tottori Sta. ----- Kumano Shrine Ruins ----- Plaza Saji/Folk Tale Story House ----- Saji Astro Park ----- Tottori Sta.
(31min) 30min (4min) 35min (7min) 30min (43min)



◎ Staying time at each spot is flexible. Please consult with your driver.
◎ Driving time and staying time may differ from those listed on flyer for routes starting from/finishing at the airport