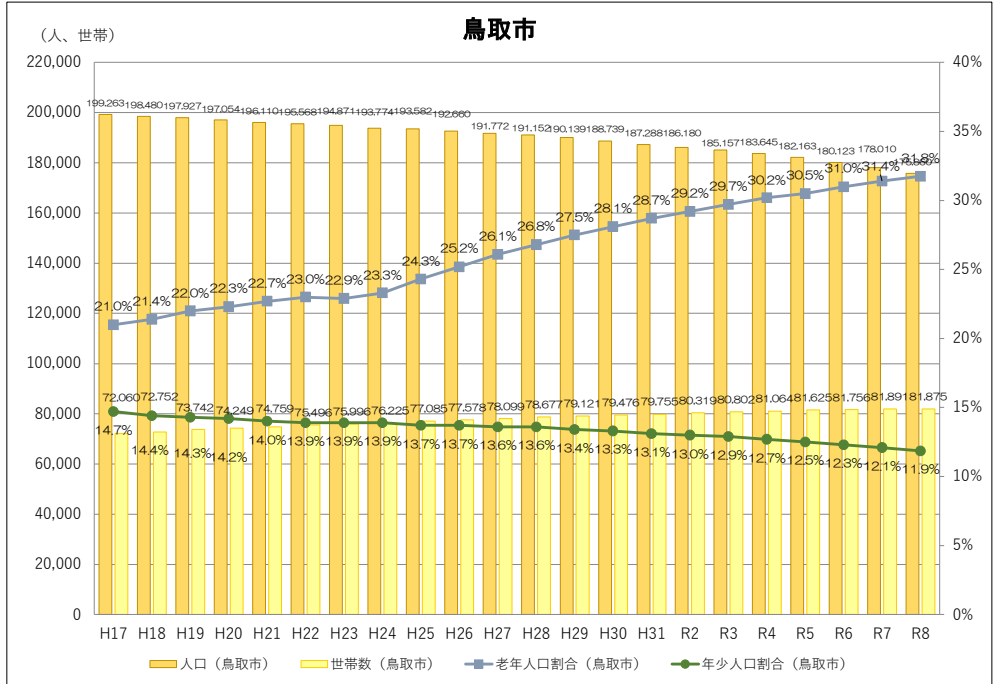
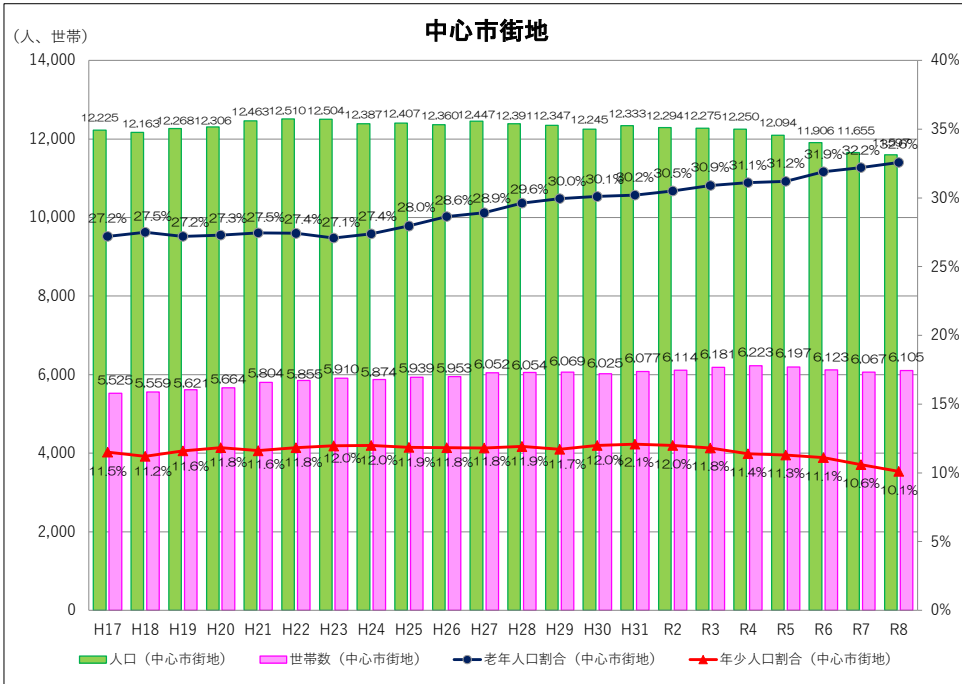


中心市街地の人口、高齢化率等の推移



	H17	H18	H19	H20	H21	H22	H23	H24	H25	H26	H27	H28	H29	H30	H31	R2	R3	R4	R5	R6	R7	R8	
人口	中心市街地	12,225	12,163	12,268	12,306	12,463	12,510	12,504	12,387	12,407	12,360	12,447	12,391	12,347	12,245	12,333	12,294	12,275	12,250	12,094	11,906	11,655	11,597
	袋川以南	6,690	6,726	6,866	6,934	7,126	7,258	7,613	7,294	7,335	7,303	7,404	7,385	7,388	7,367	7,417	7,383	7,450	7,460	7,346	7,200	7,009	6,956
	袋川以北	5,535	5,437	5,402	5,372	5,337	5,252	5,191	5,093	5,072	5,057	5,043	5,006	4,959	4,878	4,916	4,911	4,825	4,790	4,748	4,706	4,646	4,641
	旧鳥取市	149,606	149,280	149,311	148,901	148,541	148,479	148,294	147,850	148,098	147,788	147,612	147,590	147,397	146,546	145,892	145,402	144,966	144,139	143,400	142,058	140,762	139,404
	中心市街地シェア	8.2%	8.1%	8.2%	8.3%	8.4%	8.4%	8.4%	8.4%	8.4%	8.4%	8.4%	8.4%	8.4%	8.4%	8.5%	8.5%	8.5%	8.5%	8.4%	8.4%	8.3%	8.3%
世帯数	中心市街地	5,525	5,559	5,621	5,664	5,804	5,855	5,910	5,874	5,939	5,953	6,052	6,054	6,069	6,025	6,077	6,114	6,181	6,223	6,197	6,123	6,067	6,105
	1世帯当たりの人数	2.2	2.2	2.2	2.2	2.1	2.1	2.1	2.1	2.1	2.1	2.1	2.0	2.0	2.0	2.0	2.0	2.0	2.0	2.0	1.9	1.9	1.9
	袋川以南	3,146	3,203	3,280	3,299	3,428	3,516	3,578	3,573	3,656	3,683	3,764	3,759	3,772	3,781	3,807	3,836	3,914	3,960	3,933	3,862	3,810	3,825
	袋川以北	2,379	2,356	2,341	2,365	2,376	2,339	2,332	2,301	2,283	2,270	2,288	2,295	2,297	2,244	2,270	2,278	2,267	2,263	2,264	2,250	2,257	2,280
	鳥取市	72,060	72,752	73,742	74,249	74,759	75,496	75,996	76,225	77,085	77,578	78,099	78,677	79,121	79,476	79,755	80,319	80,802	81,064	81,625	81,756	81,891	81,875
年少人口割合 (15歳未満)	中心市街地	11.5%	11.2%	11.6%	11.8%	11.6%	11.8%	12.0%	12.0%	11.9%	11.8%	11.8%	11.9%	11.7%	12.0%	12.1%	12.0%	11.8%	11.4%	11.3%	11.1%	10.6%	10.1%
	袋川以南	10.7%	10.4%	11.1%	11.6%	11.5%	11.8%	11.8%	12.1%	11.8%	11.5%	11.4%	11.6%	11.6%	11.8%	11.8%	11.5%	11.4%	10.9%	10.6%	10.4%	9.8%	9.2%
	袋川以北	12.4%	12.1%	12.3%	12.2%	11.8%	12.0%	12.2%	11.9%	12.0%	12.4%	12.4%	12.3%	11.9%	12.4%	12.6%	12.8%	12.5%	12.1%	12.4%	12.2%	11.8%	11.4%
	旧鳥取市	14.7%	14.4%	14.3%	14.2%	14.0%	13.9%	13.9%	13.9%	13.7%	13.7%	13.6%	13.6%	13.4%	13.3%	13.1%	13.0%	12.9%	12.7%	12.5%	12.3%	12.1%	11.9%
	鳥取市	14.7%	14.4%	14.3%	14.2%	14.0%	13.9%	13.9%	13.9%	13.7%	13.7%	13.6%	13.6%	13.4%	13.3%	13.1%	13.0%	12.9%	12.7%	12.5%	12.3%	12.1%	11.9%
老年人口割合 (65歳以上)	中心市街地	27.2%	27.5%	27.2%	27.3%	27.5%	27.4%	27.1%	27.4%	28.0%	28.6%	28.9%	29.6%	30.0%	30.1%	30.2%	30.5%	30.9%	31.1%	31.2%	31.9%	32.2%	32.6%
	袋川以南	24.1%	24.2%	23.8%	23.7%	23.7%	23.5%	23.2%	23.6%	24.1%	25.2%	25.6%	26.4%	26.7%	27.2%	27.6%	27.8%	27.9%	28.3%	28.6%	29.7%	30.0%	30.4%
	袋川以北	31.0%	31.5%	31.5%	31.9%	32.5%	32.8%	32.5%	32.8%	33.6%	33.6%	33.7%	34.3%	34.8%	34.4%	34.1%	34.6%	35.5%	35.4%	35.1%	35.2%	35.4%	35.8%
	旧鳥取市	21.0%	21.4%	22.0%	22.3%	22.7%	23.0%	22.9%	23.3%	24.3%	25.2%	26.1%	26.8%	27.5%	28.1%	28.7%	29.2%	29.7%	30.2%	30.5%	31.0%	31.4%	31.8%
	鳥取市	21.0%	21.4%	22.0%	22.3%	22.7%	23.0%	22.9%	23.3%	24.3%	25.2%	26.1%	26.8%	27.5%	28.1%	28.7%	29.2%	29.7%	30.2%	30.5%	31.0%	31.4%	31.8%

資料：住民基本台帳（各年3月末現在）