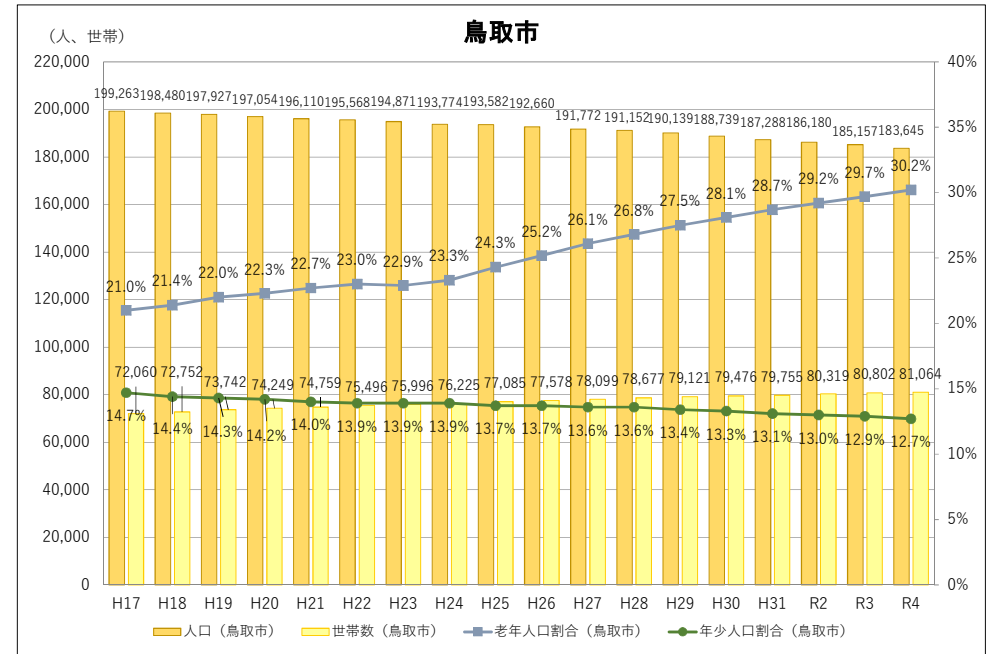
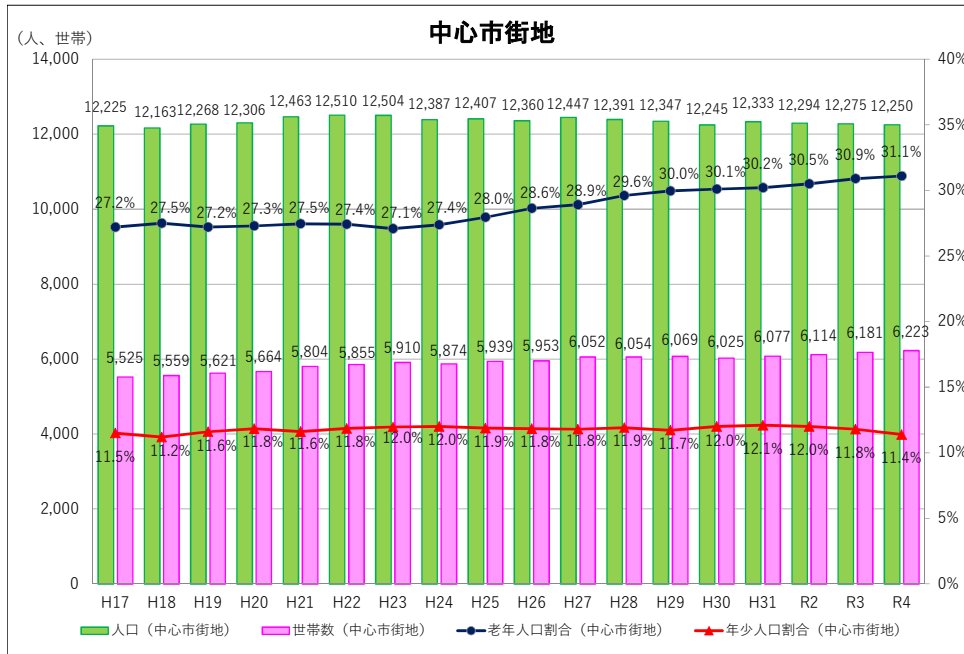


中心市街地の人口、高齢化率等の推移



		H17	H18	H19	H20	H21	H22	H23	H24	H25	H26	H27	H28	H29	H30	R2	R3	R4	
人口	中心市街地	12,225	12,163	12,268	12,306	12,463	12,510	12,504	12,387	12,407	12,360	12,447	12,391	12,347	12,245	12,333	12,294	12,275	12,250
	袋川以南	6,690	6,726	6,866	6,934	7,126	7,258	7,613	7,294	7,335	7,303	7,404	7,385	7,388	7,367	7,417	7,383	7,450	7,460
	袋川以北	5,535	5,437	5,402	5,372	5,337	5,252	5,191	5,093	5,072	5,057	5,043	5,006	4,959	4,878	4,916	4,911	4,825	4,790
	旧鳥取市	149,606	149,280	149,311	148,901	148,541	148,479	148,294	147,850	148,098	147,788	147,612	147,590	147,397	146,546	145,892	145,402	144,966	144,139
	中心市街地シェア	8.2%	8.1%	8.2%	8.3%	8.4%	8.4%	8.4%	8.4%	8.4%	8.4%	8.4%	8.4%	8.4%	8.4%	8.5%	8.5%	8.5%	8.5%
世帯数	鳥取市	199,263	198,480	197,927	197,054	196,110	195,568	194,871	193,774	193,582	192,660	191,772	191,152	190,139	188,739	187,288	186,180	185,157	183,645
	中心市街地シェア	6.1%	6.1%	6.2%	6.2%	6.4%	6.4%	6.4%	6.4%	6.4%	6.4%	6.5%	6.5%	6.5%	6.6%	6.6%	6.6%	6.6%	6.7%
	中心市街地	5,525	5,559	5,621	5,664	5,804	5,855	5,910	5,874	5,939	5,953	6,052	6,054	6,069	6,025	6,077	6,114	6,181	6,223
	1世帯当たりの人数	2.2	2.2	2.2	2.2	2.1	2.1	2.1	2.1	2.1	2.1	2.1	2.0	2.0	2.0	2.0	2.0	2.0	2.0
	袋川以南	3,146	3,203	3,280	3,299	3,428	3,516	3,578	3,573	3,656	3,683	3,764	3,759	3,772	3,781	3,807	3,836	3,914	3,960
年少人口割合 (15歳未満)	袋川以北	2,379	2,356	2,341	2,365	2,376	2,339	2,332	2,301	2,283	2,270	2,288	2,295	2,297	2,244	2,270	2,278	2,267	2,263
	鳥取市	72,060	72,752	73,742	74,249	74,759	75,496	75,996	76,225	77,085	77,578	78,099	78,677	79,121	79,476	79,755	80,319	80,802	81,064
	中心市街地	11.5%	11.2%	11.6%	11.8%	11.6%	11.8%	11.8%	12.0%	11.9%	11.9%	11.8%	11.9%	11.7%	12.0%	12.0%	12.1%	12.0%	11.8%
	袋川以南	10.7%	10.4%	11.1%	11.6%	11.5%	11.8%	11.8%	12.1%	11.8%	11.5%	11.4%	11.6%	11.6%	11.8%	11.8%	11.5%	11.4%	10.9%
	袋川以北	12.4%	12.1%	12.3%	12.2%	11.8%	12.0%	12.2%	11.9%	12.0%	12.4%	12.4%	12.3%	11.9%	12.4%	12.6%	12.8%	12.5%	12.1%
老年人口割合 (65歳以上)	鳥取市	21.0%	21.4%	22.0%	22.3%	22.7%	23.0%	22.9%	23.3%	24.3%	25.2%	26.1%	26.8%	27.5%	28.1%	28.7%	29.2%	29.7%	30.2%
	中心市街地	27.2%	27.5%	27.2%	27.3%	27.5%	27.4%	27.1%	27.4%	28.0%	28.6%	28.9%	29.6%	30.0%	30.1%	30.2%	30.5%	30.9%	31.1%
	袋川以南	24.1%	24.2%	23.8%	23.7%	23.7%	23.5%	23.2%	23.6%	24.1%	25.2%	25.6%	26.4%	26.7%	27.2%	27.6%	27.8%	27.9%	28.3%
	袋川以北	31.0%	31.5%	31.5%	31.9%	32.5%	32.8%	32.5%	32.8%	33.6%	33.6%	33.7%	34.3%	34.8%	34.4%	34.1%	34.6%	35.5%	35.4%
	鳥取市	21.0%	21.4%	22.0%	22.3%	22.7%	23.0%	22.9%	23.3%	24.3%	25.2%	26.1%	26.8%	27.5%	28.1%	28.7%	29.2%	29.7%	30.2%

資料：住民基本台帳（各年3月末現在）