



Tottori

Area Map



Make memories! 😊

4,000yen
per car for 3 hours
up to 4 passengers.



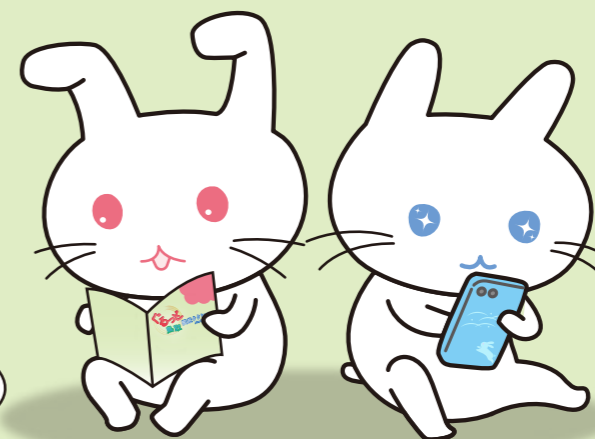
Taxi tour plans



I'd love to visit many different shrines.

I want to eat a lovely meal.

I feel like visiting classic sightseeing spots.



Reservations are not accepted.

- ◆ Flat rate of ¥4000 for 3 hours, fixed duration, expect in unavoidable circumstances.(e.g., traffic congestion)
- ◆ Admission to facilities, meals and parking fee at the Sand Dunes (¥500) are not included.
- ◆ Before heading out on the taxi tour, please consult at the departure point to confirm the route status.
- ◆ There is a limited number of vehicles per year. The service will end once the maximum is reached.

Departures Reception Hours: 9:00-17:00

JR Tottori Station

Tottori City International Tourist Support Center
111-1 Higashihonji-cho, Tottori City TEL: 0857-22-7935
E-mail: international@hal.ne.jp

Shikano (Sanshien) II

National Youth Hostel Sanshien
972-1 Imaichi, Shikano-cho, Tottori City
TEL: 0857-84-2211

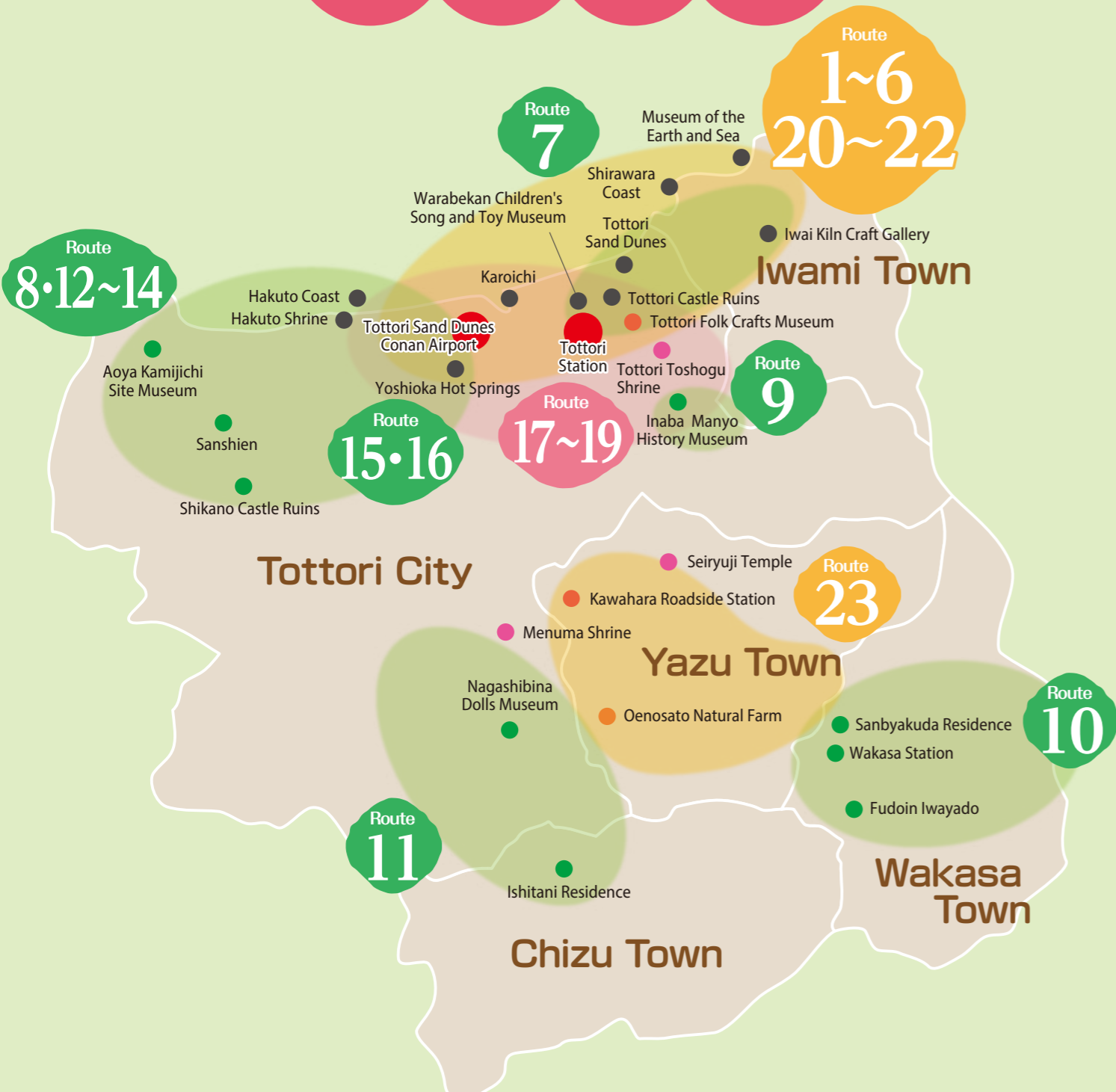
Tottori Sand Dunes Conan Airport

Tottori Sand Dunes Conan Airport Information Desk
4-110-5 Koyama-cho, Tottori City TEL: 0857-28-1402

Only the routes marked with * are available. See inside for details.

Yoshioka Hot Springs II

Yoshioka Onsen Kaikan Ichinoyu
666 Yoshiokaonsencho, Tottori City TEL: 0857-57-0555



Organizer

Tottori Taxi Cooperative Association Business Hours: 9:00 -15:00
206 Sakaemachi, Tottori City E-mail: hire-kyodo@yacht.ocn.ne.jp

Tottori Sand Dunes

With☆☆ You can start from/finish at either Tottori Sta. or Tottori Sand Dunes Conan Airport



- ★① **Tottori Sand Dunes A**
Tottori Sta. ----- Tottori Sand Dunes/Sand Museum ----- Uradome Coast
(15min) 80min (15min) 20min
----- Tottori Castle Ruins ----- Tottori Sta.
(25min) 15min (10min)
- ★② **Tottori Sand Dunes B**
Tottori Sta. ----- Hakuto Shrine/Coast ----- Tottori Sand Dunes(Sand Museum or Tanegaiké Pond)
(20min) 40min (20min) 60min
----- Tottori Castle Ruins ----- Tottori Sta.
(15min) 15min (10min)
- ☆③ **Tottori Sand Dunes C**
Tottori Sta. ----- Hakuto Shrine/Coast ----- Uradome Coast ----- Tottori Sand Dunes
(20min) 40min (35min) 70min (15min)
- ☆④ **Tottori Sand Dunes D**
Tottori Sta. ----- Tottori Sand Dunes/Sand Museum ----- Karo Shrine ----- Karo Market ----- Tottori Sta.
(15min) 66min (20min) 30min (4min) 25min (20min)
- ☆⑤ **Tottori Sand Dunes E**
Tottori Sta. ----- Tottori Sand Dunes/Sand Museum ----- Uradome Coast Boat Tour
(15min) 20min (15min) 45min
----- Shirawara Coast ----- Museum of the Earth and Sea ----- Tottori Sta.
(15min) 5min (15min) 15min (35min)
- ☆⑥ **Tottori Sand Dunes F**
Tottori Sta. ----- Tottori Sand Dunes/Sand Museum ----- Hakuto Shrine/Coast
(15min) 60min (20min) 20min
----- Karo Market ----- Tottori Sta.
(10min) 35min (20min)



History and Culture

With☆☆ You can start from/finish at either Tottori Sta. or Tottori Sand Dunes Conan Airport

- ☆⑦ **Songs and Nostalgia**
Tottori Sta. ----- Warabekan Museum ----- Tottori Castle Ruins ----- Tottori Sand Dunes/Sand Museum ----- Tottori Sta.
(5min) 60min (3min) 22min (15min) 60min (15min)
- ⑧ **Historic ruins of Yayoi Period**
Tottori Sta. ----- Hakuto Shrine/Coast ----- Aoya Kamijichi Historical Park ----- Tottori Sta.
(20min) 50min (20min) 60min (30min)
- ☆⑨ **Kokufu Town Historical Exploration**
Tottori Sta. ----- Ikeda Family Mausoleum of the Tottori Domain ----- Ube Shrine
(13min) 17min (5min) 20min
----- Inaba Manyo History Museum ----- Ancient tomb in Okamasu ----- Tottori Sta.
(7min) 60min (8min) 30min (20min)
- ☆⑩ **Steam Locomotives and Wakasa Railway**
Tottori Sta. ----- Sanbyakuda Residence ----- Fudoin Iwayado Temple
(45min) 15min (10min) 15min
----- Wakasa Sta./Wakasa Town Walk (Kariyadori St., Storehouses) ----- Tottori Sta.
(10min) 50min (35min)
- ☆⑪ **Chizu Town**
Tottori Sta. ----- Mochigase (Nagashibina Dolls Museum) ----- Chizu Town(Ishitani Residence) ----- Tottori Sta.
(25min) 45min (15min) 60min (35min)
- ☆⑫ **Shikano Town**
Tottori Sta. ----- Hakuto Shrine/Coast ----- Shikano Castle Ruins/Castle Town Walk ----- Tottori Sta.
(20min) 50min (20min) 55min (35min)
- ⑬ **Shikano(Sanshien) I**
Tottori Sta. ----- Hakuto Shrine/Coast ----- Aoya Kamijichi Historical Park
(35min) 35min (25min) 30min
----- Shikano Castle Ruins/Castle Town Walk ----- Sanshien Youth Hostel
(15min) 35min (5min)

⑭ **Shikano (Sanshien) II**
Sanshien Youth Hostel ----- Tottori Castle Ruins ----- Karo Market ----- Tottori Sta.
(25min) 30min (20min) 90min (15min)

⑮ **Yoshioka Hot Springs I**
Tottori Sta. ----- Yoshioka Hot Springs (Ichino yu) ----- Hakuto Shrine/Coast
(20min) 45min (15min) 30min
----- Tottori Sand Dunes/Sand Museum ----- Tottori Sta.
(25min) 30min (15min)

⑯ **Yoshioka Hot Springs II**
Yoshioka Hot Springs (Ichino yu) ----- Hakuto Shrine/Coast ----- Karo Market
(15min) 35min (10min) 30min
----- Tottori Sand Dunes/Sand Museum ----- Tottori Sta.
(15min) 60min (15min)



Myths and Historical Shrines

- ⑰ **Mythology I (White Rabbit Myth and Matchmaking)**
Tottori Sta. ----- Menuma Shrine ----- Hakuto Shrine/Coast ----- Tottori Sta.
(20min) 30min (30min) 80min (20min)
- ⑱ **Mythology II (Ikeda Clan Shrines and White Rabbit Myth)**
Tottori Sta. ----- Kurata Hachimangu Shrine ----- Toshogu Shrine
(10min) 25min (15min) 40min
----- Hakuto Shrine/Coast ----- Tottori Sta.
(25min) 40min (25min)
- ⑲ **Mythology III (Connecting both White Rabbit Myths)**
Tottori Sta. ----- Hakuto Shrine (Yazu Town) ----- Seiryuji Temple
(21min) 15min (5min) 35min
----- Hakuto Shrine/Coast ----- Tottori Sta.
(36min) 43min (25min)



Food and Culture

- ⑳ **Tottori Anime I**
Tottori Sta. ----- Karo Shrine ----- Karo Market ----- Tottori Sand Dunes Conan Airport ----- Tottori Sta.
(18min) 30min (6min) 50min (7min) 50min (19min)
- ㉑ **Tottori Anime II**
Tottori Sta. ----- Uradome Beach ----- Tajiri Port ----- Shirawara Lookout
(23min) 15min (2min) 30min (5min) 16min
----- Ajiro ----- Oiwa Sta. ----- Kawasakibashi Brg.
(6min) 30min (5min) 10min (3min) 5min
----- Arai Railway Crossing ----- Tottori Sta.
(3min) 5min (22min)
- ㉒ **Handicrafts and Arts**
Tottori Sta. ----- Iwai Kiln Craft Gallery ----- Hogetsudo (30min) ----- Folk Crafts Museum/Takumi Craft Shop
(28min) 86min (30min) 30min (6min)
- ㉓ **Oenosato Natural Farm**
Tottori Sta. ----- Oenosato Natural Farm ----- Kawahara Roadside Station ----- Tottori Sta.
(30min) 86min (13min) 30min (21min)



○ **Routes cannot be changed.**
 ◎ Staying time at each spot is flexible. Please consult with your driver.
 ◎ Driving time and staying time may differ from those listed on flyer for routes starting from/finishing at the airport